



The National Key Technology
R&D Program Award Project



*Speed, preliminary
examine, interventional
diagnosis and treatment
visualization guidance*



- Convex
- Linear
- Micro-convex
- Transvaginal
- Built-in screen
- Double heads
- 4D bladder

**High cost
-effective**

Handheld Wireless Mini B & Color Doppler Ultrasound Scanner

Product introduction

How it works

The Sonostar wireless probe is a mini ultrasound scanner without a screen. We minimize the components of a traditional ultrasound into a small circuit board built into the probe, and showing image in smart phone/tablet through Wifi transferring. Rotate built-in screen probe is a wireless ultrasound probe add screen, image can both show in screen and tablet. Image transferring through internal wifi from probe, no need external Wifi signal.

Product advantage



Small and small size, easy to carry.



Wireless type without probe cable, working freely.



Waterproof design, convenient for sterilization.



Remote diagnostic convenience, capability and easy image transfer



Leader in pocket ultrasound scanner

Top Configuration 192 elements 64 channels

Clear and exquisite picture rival High-end equipment

Powerful puncture guide function & pinpoint development enhancement

Harmonic noise reduction composite imaging processing

Weight less than phone, only 200G

Image transmission smoothly by internal 5G wifi



Simplified in Shape Surge in Chip

Only a probe! Just connect smart phone/tablet by wifi and it becomes a small B/Color Ultrasound Scanner



WORLD LEADING

Product series

Gray head : low configuration 80 Elements B/W Ultrasound Scanner; Light blue head : 128 Elements B/W Ultrasound Scanner; Dark blue head : 128 Elements Color Doppler Scanner; White color head : 192 Elements Color Doppler Scanner. We can customize colors for large quantity order.

Convex series

Wide and deep scanning scope, suitable for abdomen, obstetrics, gynecology and Cardiology exam.



Mini-Ultrasound Scanner

Built-in screen, option for synchronous display on smart phone or tablet.



Linear series

Parallel imaging, high frequency, detection range is small and shallow but with high definition, suitable for small parts, superficial tissue examination.



Transvaginal series

Quick follicular detection, uterine examination and surgery visual guidance in Obstetrics and Gynecology (has straight head & oblique head, both has Color Doppler & B/W for each head).



Double heads series

Double heads probe, one probe can choose different type of heads : Convex/7.5MHz Linear/10MHz Linear/Micro Convex/Transvaginal at will, one probe for multiple clinical tests, more convenient and lower overall cost.



4D bladder probe

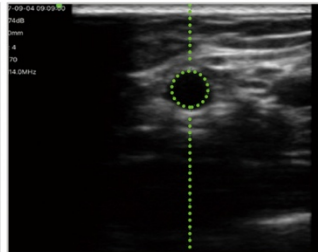
Real-time three dimensional scanning for urinary bladder volume measurement.



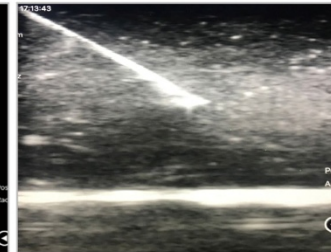
Specifications



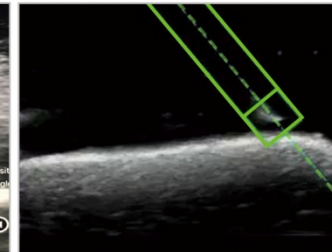
Specializes for catheter puncturing and optional needle guide



Vascular navigation and puncture guidance



Enhance needle visualization function coming soon



Magnetic navigation and positioning function coming soon

Specifications

- Scanning mode: Electronic array
- Frequency: Convex/micro-convex probe 3.5/5.0MHz, Linear probe 7.5 MHz/10.0MHz or 10/14MHz, Transvaginal Probe 6.5MHz/8.0MHz, 4D bladder probe 3.5MHz
- Depth: convex 90mm~305mm, micro-convex 100mm~200mm, linear 20mm~55mm, transvaginal 50mm~100mm, adjustable
- Radius of curvature and angle of scanning: Convex R60/60°, Micro-convex R20/88°, Transvaginal R10/149°
- Scan width: Linear 7.5MHz is 40mm, 10MHz is 25mm
- Screen size of built-in screen probe: 3.5 inches
- Display mode: B, B/M, color, PW, PDI
- Image adjustable: gain, focus, anti-phase pulse harmonics, noise reduction, DYN
- Puncture assist function: in-plane puncture guide line, external puncture guidance automatic blood vessel measurement, and the enhance needle visualization function needle point development.
- Battery working time: 3 hours
- Charging mode: USB charging or wireless charging.
- Measurements: Distance, area, circumference, angle heart rate, obstetrics.
- 4D bladder probe automatic volume measurement: range 10ml~2000ml, error < 5%, speed 2s.
- Size: Convex/linear: 156mm×60mm×20mm, transvaginal: 296mm×60mm×20mm, 4D bladder probe: 180mm×60mm×60mm
- Weight: Convex/linear/Micro-convex: 278g, 4D bladder probe: 420g, transvaginal 300g
- Image frame rate: 20f/s
- Connection type: probe connects to smart phone/tablet by built-in wifi
- Wifi type: 802.11n/2.4G/5G/450Mbps
- Consultation function: remote internet consultation through smart phone and tablet, as well as multi-cell phone/tablet for consultation.
- Working system: Apple iOS, Android and Windows

Popularize to every medical workers



Usage



1. For iPhone/iPad, please search "WirelessUSG" in Appstore and download; For Android, please download from our website or copy from another smart phone/ tablet.

2. Press the probe button to start up, then open the Wi-Fi of the smart phone/tablet, select the Wi-Fi from the probe, and enter the password as the probe serial number in lower case letters (e.g: SN: C1234567, the password is c1234567,don't input "SN").

3. Open the installed software and begin use.

Reminder: a long button press is shutdown and a short press is freeze..

Install software

Scan QR code, or search "WirelessUSG" in Appstore and download



iPhone APP



iPad APP



Android APP



Windows APP

Smart phone becomes ultrasound scanner

Accessories & software

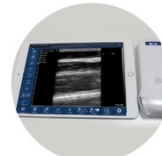
Accessories



Bluetooth Printer



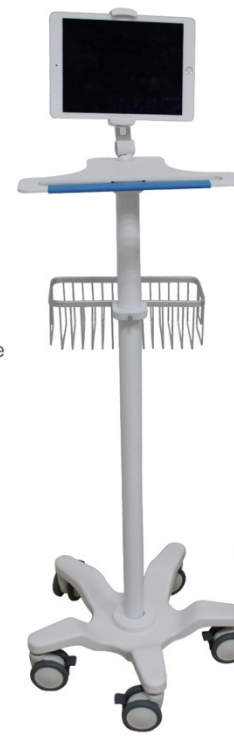
Needle puncture guide



Android tablet/iPad



Smart glasses



Trolley



Wireless charger



Tablet bracket



Disposable probe cover



Needle guide

Clinical application

Clinical value

Precision medical visualization tool, first aid quick examination, basic examination, wireless ultrasound probe is not only help the medical workers to improve working efficiency, reduce labor intensity and working pressure, but also improve diagnostic confidence and treatment. Minimize diagnostic and treatment errors, complications, sequelae, medical accidents and disputes.

Application directions

1. Visualization tools: invasive intervention guide, surgical and therapy guidance.
2. Emergency inspection: ER, ICU, Wild First Aid, battlefield rescue.
3. Preliminary examination: Ward Inspection, primary clinic examination medical examination, health screening, home care, family planning, etc.
4. Remote diagnosis, consultation, training: works on smart phone or tablet, easy telecommunications.

Applicable Clinic

Anaesthesia, pain, ICU, urology, nephrology, cardiology, rehabilitation, orthopedics, gynaecology, reproductive, obstetrics, neonatology, pneumology, gastroenterology, hepatological surgery, general surgery, vascular surgery, thyroid surgery, skull surgery, neurology, transplantation, ophthalmology, dermatology, emergency, nursing, inpatient, physical examination, and ER ambulance, primary care, family planning centers, family medicine, home care, nursing home, prisons, plastic surgery, small needle knife/acupuncture treatment clinic, sports medicine, battle field ambulance, disaster ambulance, etc.

Example of usages

Puncture/intervention guide: thyroid ablation, neck vein puncture, subclavian vein puncture, and neck and arm nerves, canal of arantius, spine puncture, radial vein injection, percutaneous renal surgery guide, hemodialysis catheter/thrombosis monitoring, abortion, bile duct puncture, hydrosarticuli extraction, pain therapy and cosmetic surgery, urine catheterization.

Emergency inspection: internal bleeding, Pleural effusion, pneumothorax, Atelectasis of lung, Temporal / posterior auricular fistula, pericardial effusion.

Daily inspection: thyroid, breast, liver cirrhosis, fatty liver, prostate/pelvics, stroke screening, retinal artery, uterus, follicular monitoring, fetus, musculoskeletal, podiatry, fractures, varicose veins, spleen, bladder/urinary function, urine volume measurement.



Support to connect various internal and remote information system, convenient to the realization of consultation.

high praise from customers >>> >>>

hello dear
i have a great news
Today, the Head of Purchasing Department of medical equipment, the Ministry of Defense, announced that it was ready to buy 500 pieces. We are starting to prepare documents

✓ On-time shipment safeguard ✓ Pre-shipment product quality safeguard
Incredibly happy with the product and service! I'm a rural family physician in Canada. I ordered the curvilinear array probe to facilitate my work in both clinic and the emergency department. The size is fantastic, fits in my front pocket with no problem. I was expecting some problems with image transition as it uses a wifi signal, however so far it has been perfectly smooth with no glitching. It's range is 9cm, 12cm, 16cm and 20cm, so that's obviously mildly limiting, but not unexpected for a hand held device. Also the image at greater depths can be a bit hard to make out (IVC for fluid resuscitation is quite difficult in a larger patient), however it gives beautiful images for cardiac, AAA, obstetrics and FAST exam. Conclusion: great tool for the price, obviously not as quality as a 30,000 dollar machine, but convenient and useful.

Hello Mr.Zhang,
I wish you a happy new year. Thank you for the nice feedback. The probe is very good. I will work with it first and then start with the customer advertisement. I look forward to a good cooperation.
Best regards
Karl Heinz Wilbert
20:53
thanks. 20:54 ✓

Dear cai got the color you are great man thanks!!!
Thank your technical staff gianni!
Dear Cai
First of all, I would like to say Congratulations about the new color doppler.
Good image !!!! Good features
GOOD JOB

Realize accurate, timely diagnosis and treatment, reduce medical malpractice, misdiagnosis missed diagnosis

WirelessProbeEC2018/CO



Development Goal

To become a world-class technology company

Performance/Honor

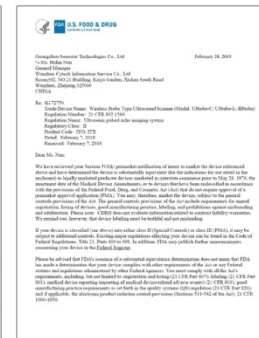
- Leading 2D & 4D wireless ultrasound probe, pioneer at home and abroad
- Innovative technologies and R&D, while leading the industry bringing new products to the market with speed quality.
- The state recognizes high-tech enterprises, and the National Science and Technology Department focuses on research and development plans, innovation funds and industry-university-research projects.

Company Culture

- Pursues innovation and differentiation
- Focuses on efficient operations
- Creates value, benefits mankind and achieves ego
- Focus on mutual cooperation, so all parties benefit



The state identifies high-tech enterprises



Sonostar Technologies Co., Limited

Address: C Building, #27 Yayingshi Road, Science Town, Guangzhou, China
 Parts Factory: #31 Dashuiwan Road, Xiangzhou, Zhuhai, Guangzhou, China
 Tel: +86-20-32382095 Fax: +86-20-62614030 Skype: sonostar-ut
 www.sonostarmed.com Mail: sales@sonostar.net Whatsapp: 18126862446

